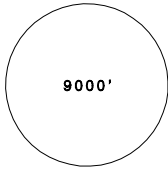
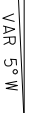
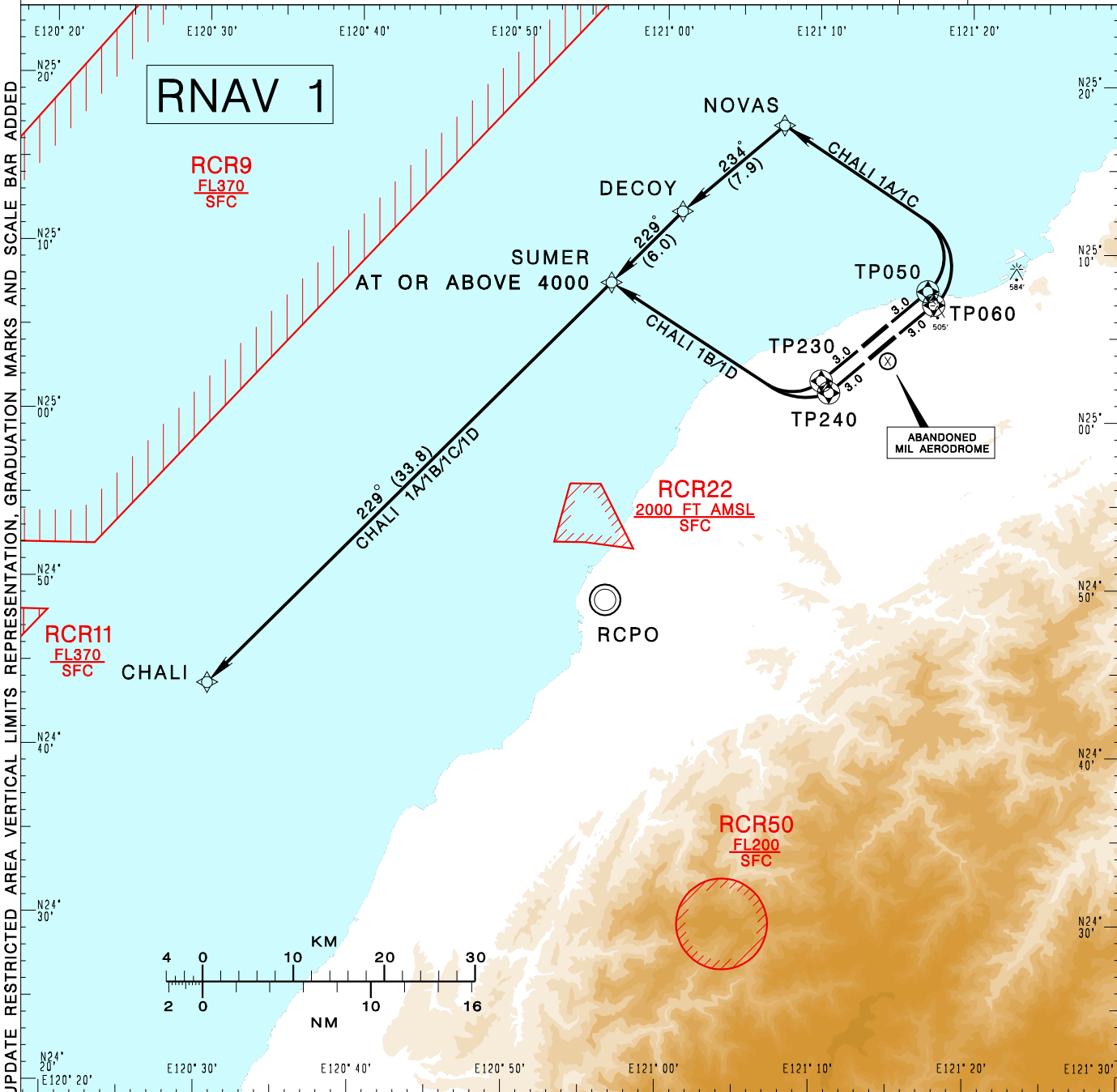


臺灣桃園國際機場
TAIPEI/TAIWAN TAOYUAN INTL AD

RCTP SID
CHALI 1A RNAV(RWY05R) CHALI 1C RNAV(RWY05L)
CHALI 1B RNAV(RWY23L) CHALI 1D RNAV(RWY23R)

TAIPEI APP 125.1 128.5	TAIPEI TWR 118.7 129.3	ATIS 127.6	 <p>9000'</p> <p>MSA ARP 25NM</p>	
Apt Elev: 108'		Trans Level: FL130		 <p>VAR 5° W</p>
Trans Alt: 11,000'				
BEARINGS ARE MAGNETIC; DISTANCES ARE NAUTICAL MILES; ELEVATIONS, HEIGHTS IN FEET				



CHANGES: NEW PAGE NUMBER, UPDATE RESTRICTED AREA VERTICAL LIMITS REPRESENTATION, GRADUATION MARKS AND SCALE BAR ADDED	<p>CHALI ONE ALFA RNAV DEPARTURE Climb on RWY HDG until leaving 600ft, then direct to TP060, NOVAS, DECOY, SUMER, CHALI. Cross SUMER at or above 4,000ft.</p>	<p>NOTE 1. RWY 05L/05R: speed restriction of 210KT IAS maximum until established on track to NOVAS. 2. RWY 23R/23L: speed restriction of 210KT IAS maximum until established on track to SUMER. 3. Minimum climb gradient required: RWY 05L: 4.1% (250 ft/NM) until NOVAS RWY 05R: 4.7% (286 ft/NM) until NOVAS RWY 23L: 3.4% (210 ft/NM) until SUMER 4. Radar monitoring required.</p>
	<p>CHALI ONE CHALI RNAV DEPARTURE Climb on RWY HDG until leaving 600ft, then direct to TP050, NOVAS, DECOY, SUMER, CHALI. Cross SUMER at or above 4,000ft.</p>	
	<p>CHALI ONE BRAVO RNAV DEPARTURE Climb on RWY HDG until leaving 600ft, then direct to TP240, SUMER, CHALI. Cross SUMER at or above 4,000ft.</p>	
	<p>CHALI ONE DELTA RNAV DEPARTURE Climb on RWY HDG until leaving 600ft, then direct to TP230, SUMER, CHALI. Cross SUMER at or above 4,000ft.</p>	